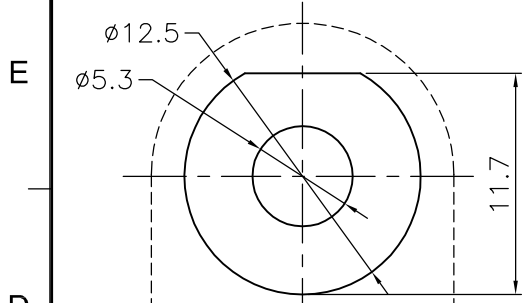


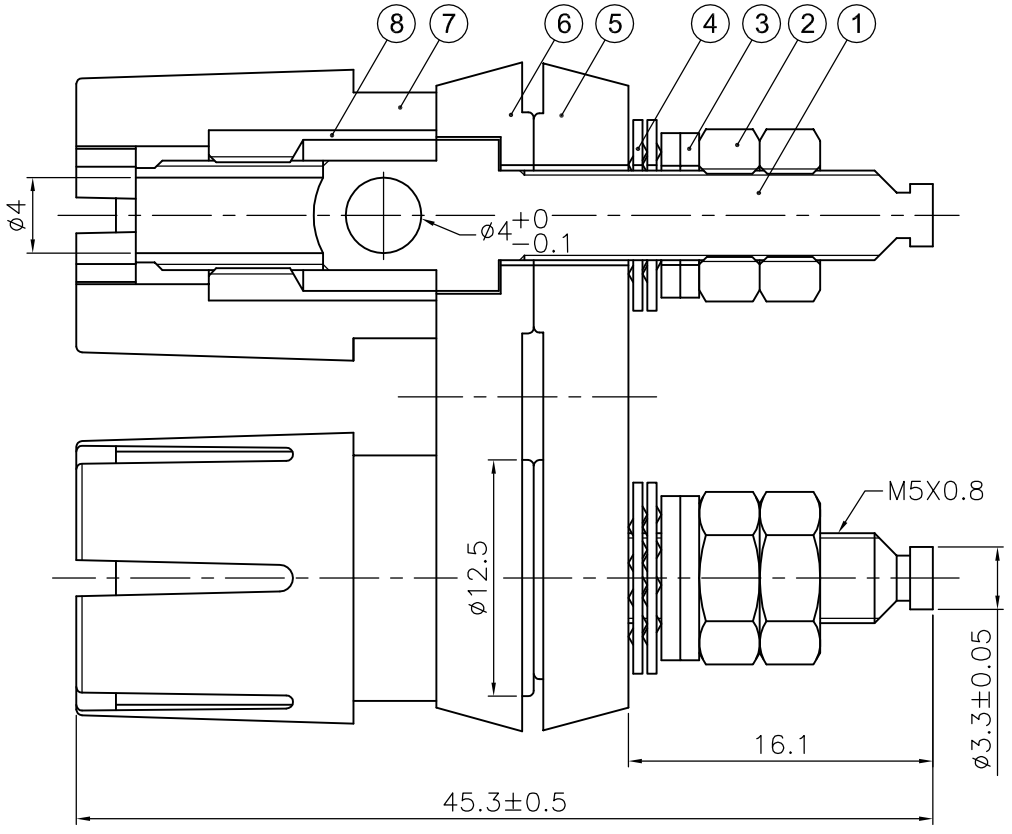
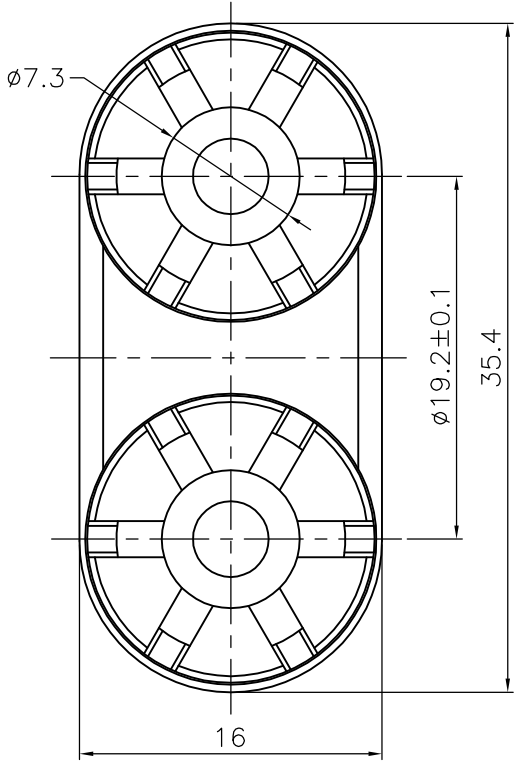
REVISIONS		
ISS	ZONE	DESCRIPTION\PER REQUEST\DATE
A3	A-3	更正產品零件品號
V	OPEN	對客戶公開圖紙
	OPEN	對供應商公開圖紙
	CLOSED	僅限廠內使用

Technique requests(技術要求):
 1. Appearance, no burr, shrink, flow mark and other flaw in periphery.
 (外表光滑,無毛邊,縮水,流痕等缺陷)

2. Screw thread can spin inside smoothly ;
 Do not have phenomenon of slippery tooth, locking tooth and other problems
 (螺紋旋入順暢,不得有滑牙及卡牙等現象)



Recommended Mounting Hole (建議架設孔)



NO.	DESCRIPTION	MATERIAL	FINISH	Q'TY	DRAWING NO.
8	滾花螺母(KNURL NUT)	H59-1	鍍鎳(NICKEL)	2	3103040008
7	螺套(CAP)	PA66	黑&暗紅(BLACK & DARK RED)	2	4301060006 4301060007
6	後蓋(BACK COVER)	PA66	黑色(BLACK)	1	4301060009
5	前蓋(FRONT COVER)	PA66	黑色(BLACK)	1	4301060008
4	墊圈(WASHER)	65Mn	黑色(BLACK)	4	1416040030
3	平墊圈(WASHER)	A3	鍍鎳(NICKEL)	4	1416040014
2	六角螺母(HEX.NUT)	A3	鍍鎳(NICKEL)	4	1406010012
1	螺杆(SCREW POST)	H59-1	鍍鎳(NICKEL)	2	4202020013

DIMENSIONS ARE IN MILLIMETERS
 UNLESS OTHERWISE SPECIFIED
 TOLERANCES
 ANGLES = ±5°
 UP TO 6 = ±0.2
 6-40 = ±0.4
 40-120 = ±0.6
 120-315 = ±1
 ABOVE 315 = ±1.6

THIRD_ANGLE $\frac{1}{4}$
 SCALE 2.5/1

APPROVED *吳碧珊* DATE 2020-04-27
 CHECKED *吳碧珊* DATE
 DRAWN 吳碧珊 DATE 2020-04-27
 FILE NO. D:\CAD\IST\5116010036_
 ST359L-D_CA001A3
 ERP LINK: 5116010036

SUN RISE 日昇電子股份有限公司
 SUN RISE EXACT INDUSTRIAL CO.

TITLE: DUAL BINDING POST, SCREW TYPE

PART NO. ST359L-D REV. A3