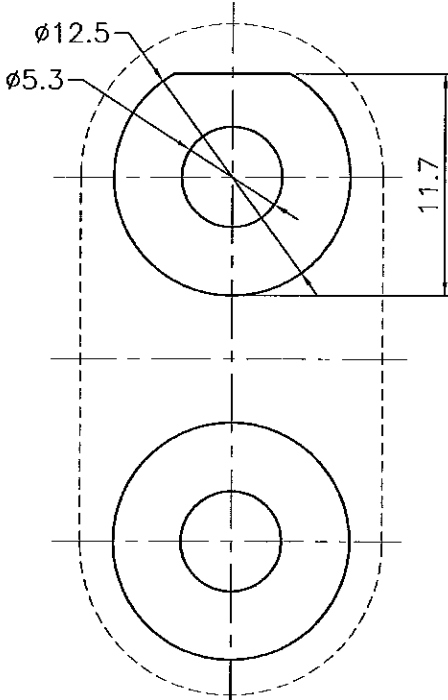


REVISIONS		
ISS	ZONE	DESCRIPTION\PER REQUEST\DATE
A2	ALL	更新圖紙,修改定位孔尺寸
V	OPEN	對客戶公開圖紙
	OPEN	對供應商公開圖紙
	CLOSED	僅限廠內使用

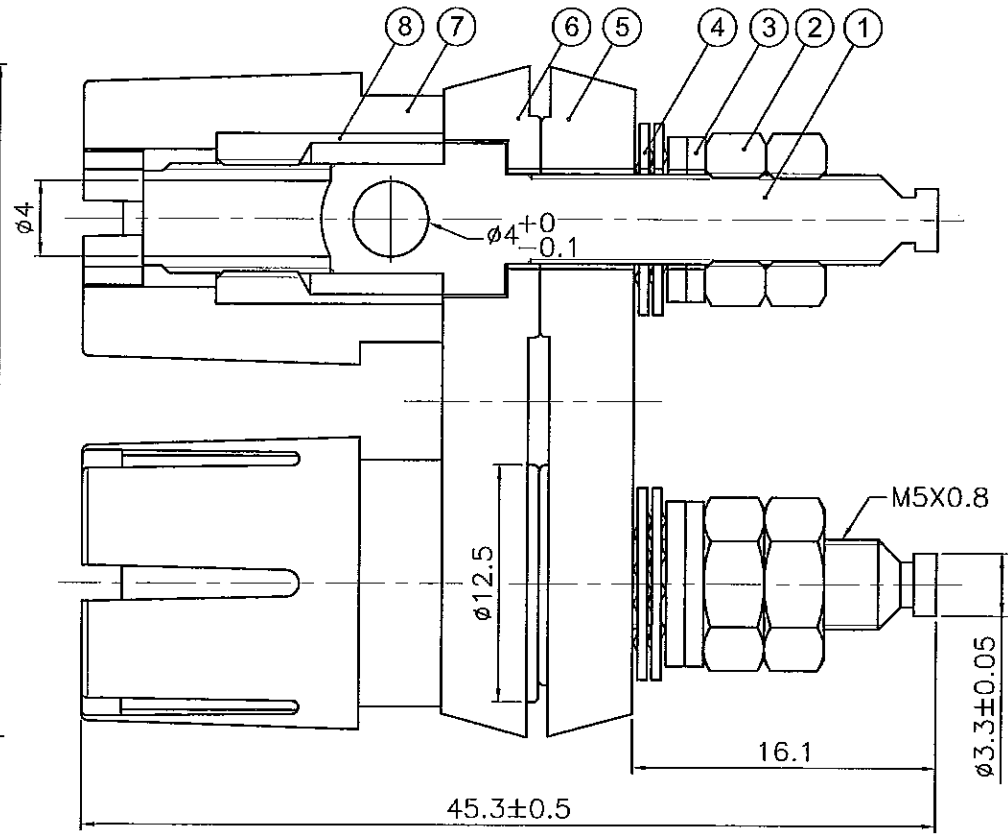
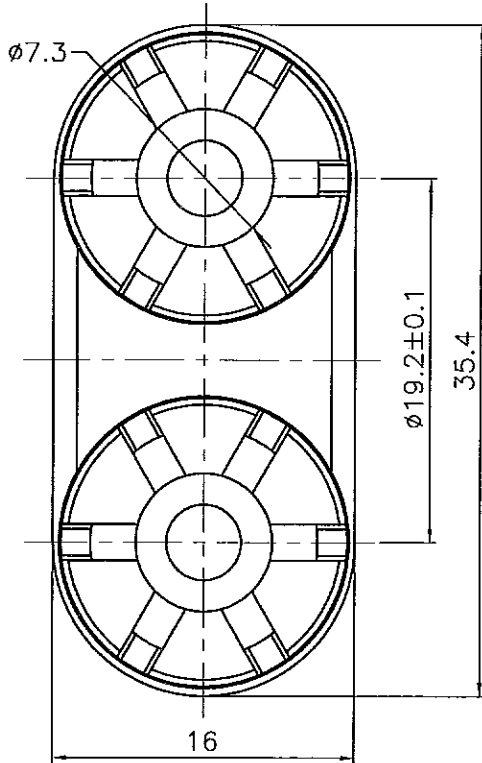
Technique requests(技術要求):
 1. Appearance, no burr, shrink, flow mark and other flaw in periphery.
 (外表光滑,無毛邊,縮水,流痕等缺陷)

2. Screw thread can spin inside smoothly ;
 Do not have phenomenon of slippery tooth, locking tooth and other problems
 (螺紋旋入順暢,不得有滑牙及卡牙等現象)

台灣日昇電子股份有限公司
ISSUE APPROVED
 發行核可 本文件與簽核
 紙本正本相符



RECOMMENDED MOUNTING HOLE
 (建議架設孔)



NO.	DESCRIPTION	MATERIAL	FINISH	Q'TY	DRAWING NO.
8	滾花螺母 (KNURL NUT)	H59-1	鍍金(GOLD)	2	
7	螺套 (CAP)	PA66	黑&暗紅 (BLACK & DARK RED)	2	
6	後蓋 (BACK COVER)	PA66	黑色 (BLACK)	1	
5	前蓋 (FRONT COVER)	PA66	黑色 (BLACK)	1	
4	墊圈 (WASHER)	65Mn	黑色 (BLACK)	4	
3	平墊圈 (WASHER)	A3	鍍金 (GOLD)	4	
2	六角螺母 (HEX.NUT)	A3	鍍金 (GOLD)	4	
1	螺杆 (SCREW POST)	H59-1	鍍金 (GOLD)	2	

DIMENSIONS ARE IN MILLIMETERS
 UNLESS OTHERWISE SPECIFIED
 TOLERANCES
 ANGLES = ±5°
 UP TO 6 = ±0.2
 6-40 = ±0.4
 40-120 = ±0.6
 120-315 = ±1
 ABOVE 315 = ±1.6

THIRD_ANGLE $\frac{1}{4}$ $\frac{1}{2}$

SCALE 2.5/1

APPROVED *黃奕* DATE 2014-07-10
 CHECKED DATE 2014-07-10
 DRAWN 吳碧珊 DATE 2014-07-10
 FILE NO. D:\CADIST\5116010041_ST359L-D-G_CA001A2
 ERP LINK: 5116010041

SUNRISE 日昇電子股份有限公司
 SUN RISE EXACT INDUSTRIAL CO.

TITLE
 DUAL BINDING POST, SCREW TYPE
 GOLDEN PLATED

PART NO. ST359L-D-G REV. A2