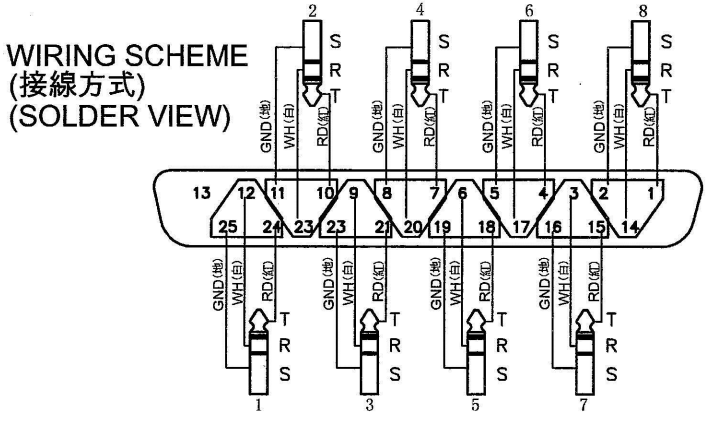
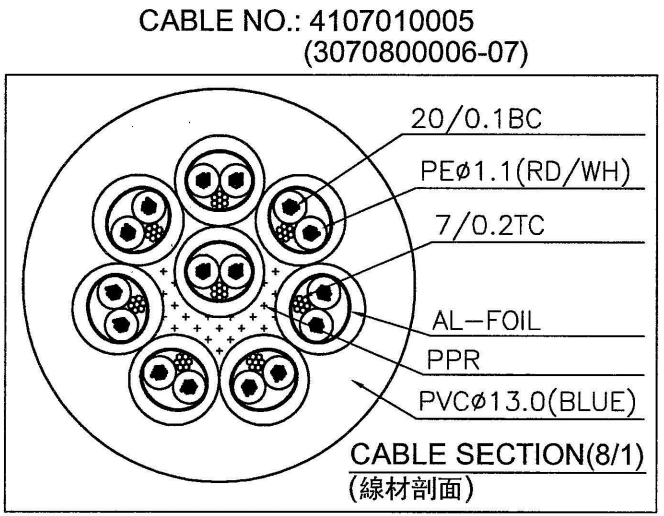
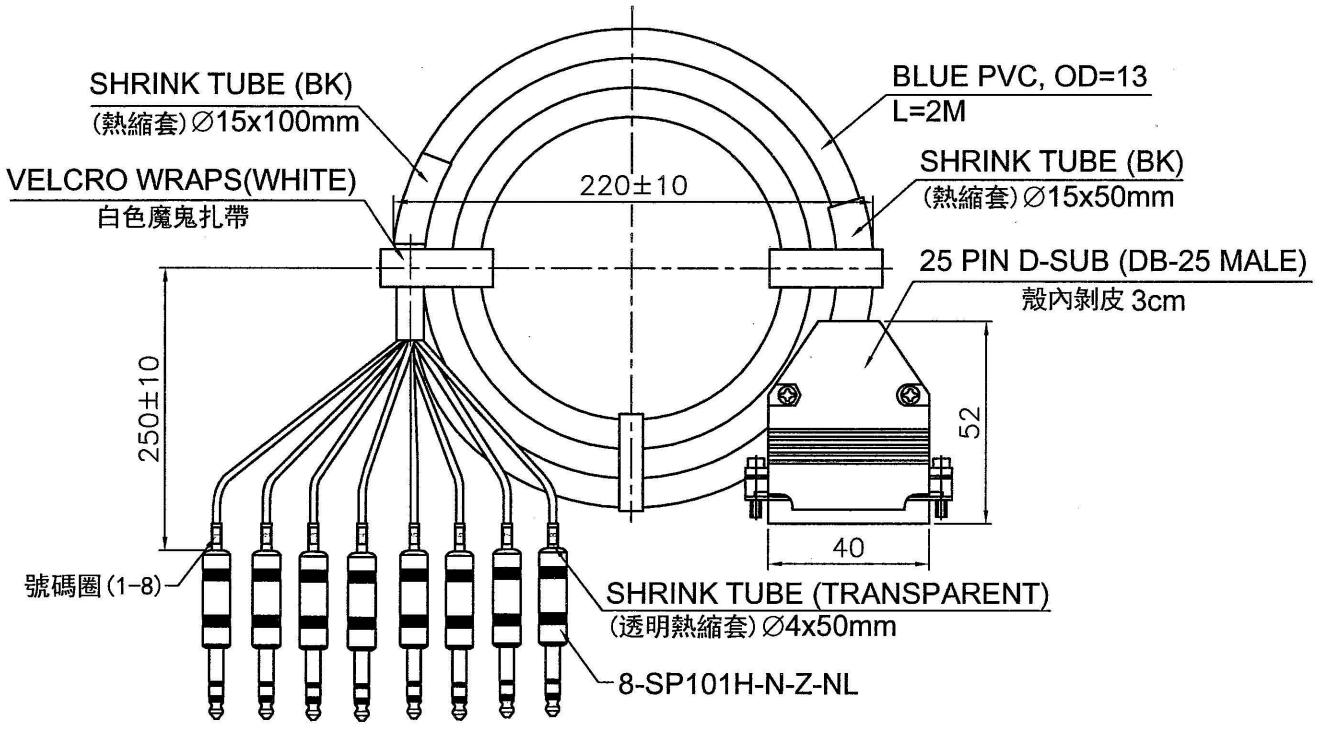


REVISIONS		
ISS	ZONE	DESCRIPTION\PER REQUEST\DATE
A3	D-1	200±10修改為250±10
V	OPEN	對客戶公開圖紙
	OPEN	對供應商公開圖紙
	CLOSED	僅限廠內使用

台灣日昇電子股份有限公司
ISSUE APPROVED
 發行核可 本文件與審核紙本正本相符

MULTI-PAIR STAGE CABLE



DIMENSIONS ARE IN MILLIMETERS
 UNLESS OTHERWISE SPECIFIED
 TOLERANCES

ANGLES	= ±5°
UP TO 6	= ±0.2
6-40	= ±0.4
40-120	= ±0.6
120-315	= ±1
ABOVE 315	= ±1.6

THIRD_ANGLE:

SCALE: 1/2

APPROVED		DATE	2013-05-06
CHECKED		DATE	2013-05-06
DRAWN	吳碧珊	DATE	2013-05-06
FILE NO.	D:\CAD\SSCI 5209010041_SSC-916-2M-NL_CA001A3		
ERP LINK:	5209010041		

	日昇電子股份有限公司 SUN RISE EXACT INDUSTRIAL CO.	
	TITLE DB-25 MALE TO 8CH PHONE PLUG STEREO CABLE ASSEMBLY, L=2M	
PART NO.	SSC-916-2M-NL	REV. A3

F
E
D
C
B
A

F
E
D
C
B
A