

**POWER CODE/POWER CONNECTOR**

**SC501-**

LENGTH: 0.8M 1.5M 2M 3M 5M  
10M 15M 20M 25M 20M

CABLE TYPE:  
NO REMARK=RVV CABLE  
KYJV=KYJV XLPE CABLE

AWG & mm<sup>2</sup>:  
13AWG 6:6mm<sup>2</sup>  
14AWG 4:4mm<sup>2</sup>  
=(2.0:2.0mm<sup>2</sup>) 2.5:2.5mm<sup>2</sup>  
16AWG 1.5:1.5mm<sup>2</sup>  
18AWG 1.0:1.0mm<sup>2</sup>  
0.75:0.75mm<sup>2</sup>  
\*SOME CONNECTOR CAN' T SUPPLY

TYPE:  
US: IEC CONNECTOR  
EU: EURO CONNECTOR  
UK: UNITED KINGDOM  
CH: CHINA / AUSTRALIA  
AUS: CHINA / AUSTRALIA WITH  
EXTENSION OUTLET  
592: SVP592-FA-BL TO SVP592-FB-GY  
POWER CONNECTOR  
BB: SVP592-FA-BL TO SVP592-FA-BL  
POWER CONNECTOR  
FWM: SVP598F-W TO SVP598M-I  
FWBY: SVP598F-W TO SVP592-FB-GY  
CEEHC: CEE 3P TO SVP592HC  
CEE: CEE 3P FEMALE TO CEE MALE 3P  
HCHC: SVP592HC TO SVP592HC

32:32AMP

SC501: POWER CODE SERIES ITEM



**SC501-AUS**  
for China/Australia  
extension cord plug with rear socket



**SC502-CHTHRU**  
for China/Australian  
extension cord  
plug with rear socket



**SC501-32CEEHC-6**  
32A CEE 3PIN MALE CONNECTOR TO SVP592HC  
6mm2 3C RVV CABLE

**SC501-32CEEHC-4 KYJV**  
32A CEE 3PIN MALE CONNECTOR TO SVP592HC  
4mm2 3C KYJV XLPE CABLE



**SC501-US**



**SC501-EU**



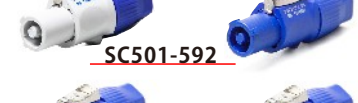
**SC501-UK**



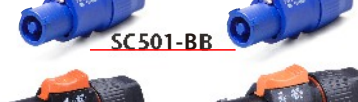
**SC501-CH**



**SC501-AUS**



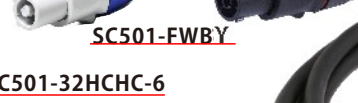
**SC501-592**



**SC501-BB**



**SC501-FWMI**



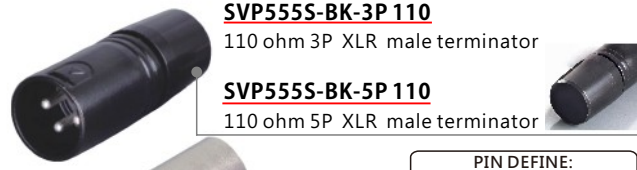
**SC501-FWBY**



**SC501-32HCHC-6**  
32A SVP592HC TO SVP592HC  
6mm2 3C RVV CABLE

**SC501-32HCHC-4KYJV**  
32A SVP592HC TO SVP592HC  
4mm2 3C KYJV XLPE CABLE

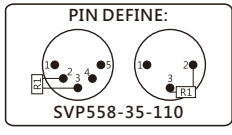
**DMX TERMINATOR**



**SVP555-BK-3P 110**  
110 ohm 3P XLR male terminator



**SVP558-35-110**  
DMX terminator  
XLR MALE 3 & 5PIN  
with 110 ohm terminator  
for light system close loop



**DMX ADAPTOR**



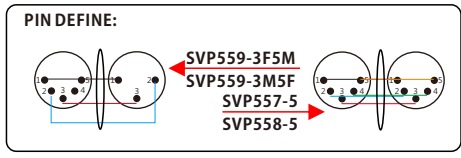
**SVP559-3F5M**

**SVP559-3M5F**

**SVP557-5**

**SVP558-5**

ITEM	A F/M	A PIN	B PIN	B F/M
SVP557-5	FEMALE	5	5	FEMALE
SVP558-5	MALE	5	5	MALE
SVP559-3F5M	FEMALE	3	5	MALE
SVP559-5F3M	FEMALE	5	3	MALE



**LIGHT ENGINEER TOOLS**



**SC71025-DMX**  
5P XLR MALE to 2X 3PIN XLR FEMALE  
design for Avolites console output  
1&3 change to 2x 3p XLR