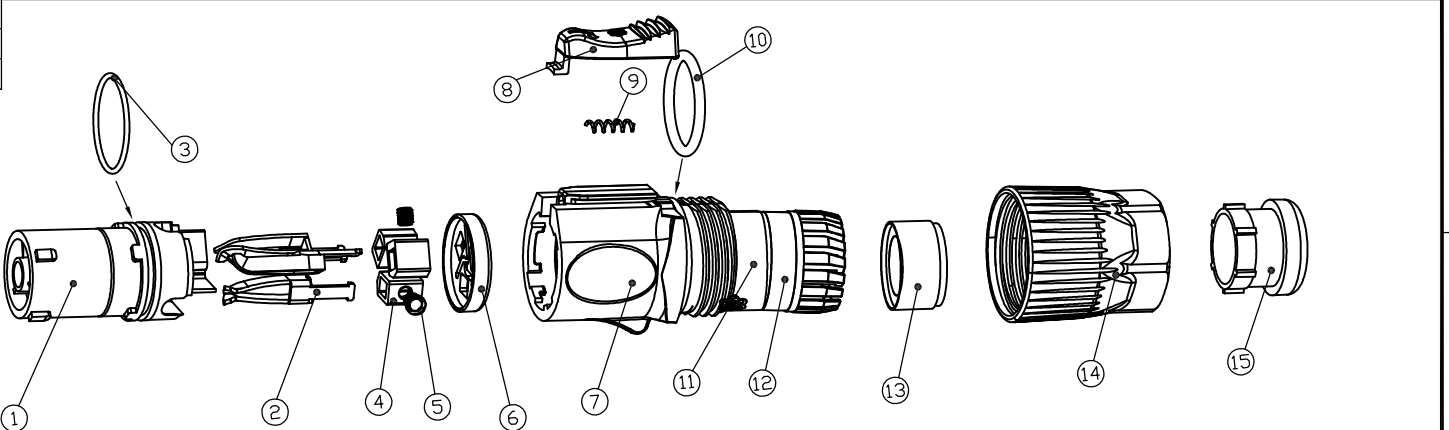
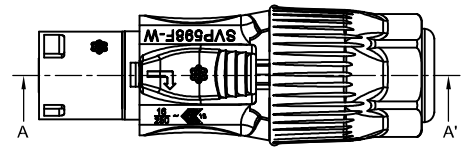
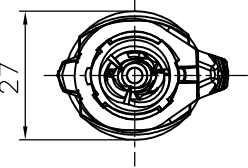
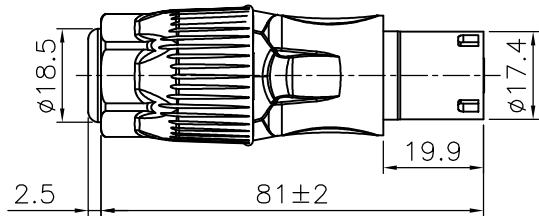
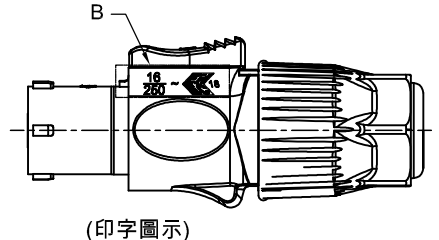
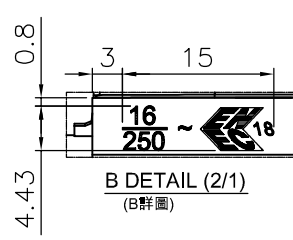
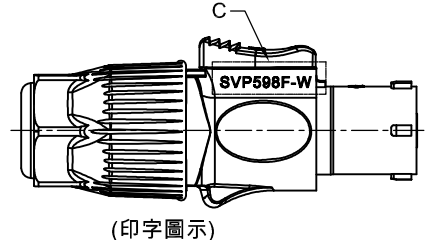
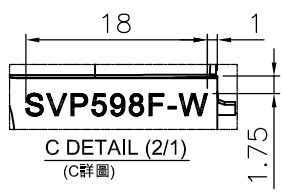


REVISIONS		
ISS	ZONE	DESCRIPTION\PER REQUEST\DATE
A8	D-7	認證印字修改
V	OPEN	對客戶公開圖紙
	OPEN	對供應商公開圖紙
	CLOSED	僅限廠內使用



LOGO: $\frac{16}{250} \sim$ 

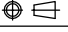
LOGO: **SVP598F-W**
 Text fonts(字型): Arial
 Text: INK / White (油墨印字/白色)
 印字方向須與圖紙相同 (印字圖示)
 (需使用防汽油油墨)




品號 (ERR link)	品名 (Part No.)	按鍵 (Push Button)	尾套 (Boot)	O型圈 (O-washer)
5113230022	SVP598F-W	橙色(Orange)	橙色(Orange)	Ø18x2(紅色硅膠)
5113230034	SVP598F-W-BK	鍍鎳(Nickel)	黑色(Black)	Ø20x1.5(黑色橡膠)

12	夾線爪(CABLE CLAMP)	PA (94V0)	白色(WHITE)	1	
11	密封圈(SEAL RING) Ø19*L5	SILICA GEL (94V0)	黑色(BLACK)	1	
10	O型圈(O-WASHER) 外徑Ø18x2mm	SILICA GEL	紅色(RED)	1	
9	彈簧 (SPRING) Ø2.4*Ø1.8*9.5	75#		1	
8	按鍵(PUSH BUTTON)	ZZnAL4-1	橙色(ORANGE)	1	
7	塑殼(SHELL)	PA (94HB)	黑色(BLACK)	1	
6	後蓋(BACK COVER)	PA (94V0)	黑色(BLACK)	1	
5	內六角螺絲M4*5 (INNER SIX ANGLE SCREW)	SUS304		3	
4	異形銅(SLEEVE) 7.25*5*7mm	H59-1	鍍鎳(NICKEL)	3	
3	O型圈(O-WASHER) 外徑Ø15*1.5mm	SILICA GEL	紅色(RED)	1	
2	插針(PIN)	PHOSPHOR BRONZE	鍍銀(SILVER)	3	
1	塑本體(BODY)	PA (94V0)	黑色(BLACK)	1	
NO.	DESCRIPTION	MATERIAL	FINISH	Q'TY	DRAWING NO.

15	尾套(BOOT)	SILICA GEL (94V0)	橙色(ORANGE)	1	
14	螺套(CAP)	PA (94HB)	黑色(BLACK)	1	
13	防水圈(CABLE CLAMP) 兩款規格,適用線徑: (Ø8.5~Ø11 / Ø12~Ø15)	SILICA GEL (94V0)	黑色(BLACK)	1+1	

DIMENSIONS ARE IN MILLIMETERS		APPROVED	DATE
UNLESS OTHERWISE SPECIFIED TOLERANCES		吳碧珊	2023-12-07
ANGLES = ±5°		CHECKED	DATE
UP TO 6 = ±0.2			
6-40 = ±0.4		DRAWN	DATE
40-120 = ±0.6		吳碧珊	2023-12-07
120-315 = ±1		FILE NO.	D:\CAD\SVP其他系列2\5113230001_
ABOVE 315 = ±1.6		SVP598F-W_CA001A8	
THIRD_ANGLE		ERP LINK:	5113230001
SCALE	1/1.5		

	日昇電子股份有限公司 SUN RISE EXACT INDUSTRIAL CO.	
	TITLE 3PIN IN LINE FEMALE POWER CONNECTOR FOR INPUT,16A	
PART NO.	SVP598F-W	REV. A8