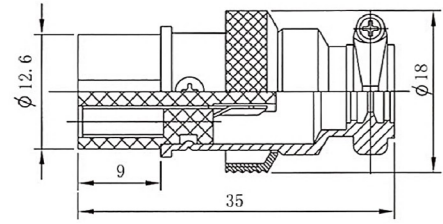
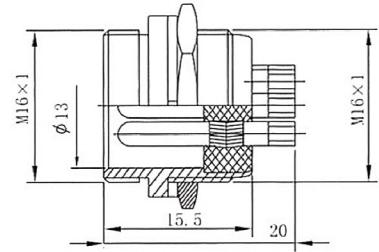


## M16mm Circular Connector

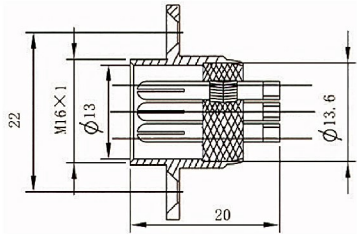
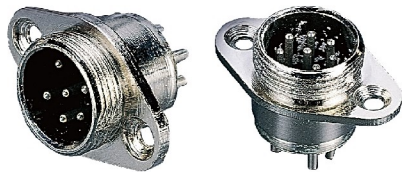
**Female Plug**  
**SVP564M**  
2~9P



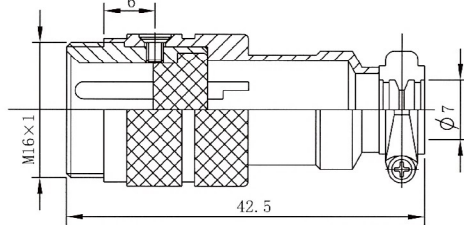
**Male Receptacle**  
**SVP564A-1C**  
(One Side Profile)  
**SVP564A-2C**  
(Dual Side Profile)  
2~9P



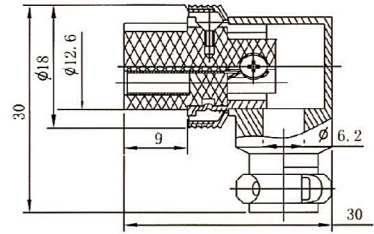
**Male Receptacle**  
**SVP564D**  
2~9P



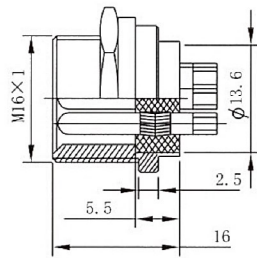
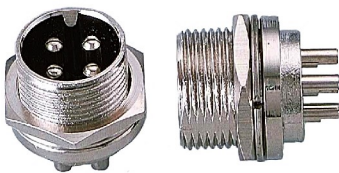
**Male Plug**  
**SVP564C**  
2~9P



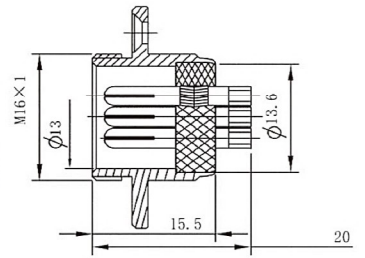
**Female Right Plug**  
**SVP564M-R**  
2~9P



**Male Receptacle**  
**SVP564A-1T-1C** (One Side Profile)  
**SVP564A-1T-2C** (Dual Side Profile)  
One Thread, 2~9P



**Male Receptacle**  
**SVP564B**  
2~9P



M16mm								
No. of Contacts	2P	3P	4P	5P	6P	7P	8P	9P
Rated Current/Voltage	7A-125V		5A-125V		4A-125V			
Work Volt (AC. V)	200		200		200			
Dielectric Withstanding Voltage (AC. V/min)	1500		1500		1500			
Insulation Resistance (M ohm)/500V	1500		1500		2000			
Contact Resistance (M ohm)/A	10		10		10			

